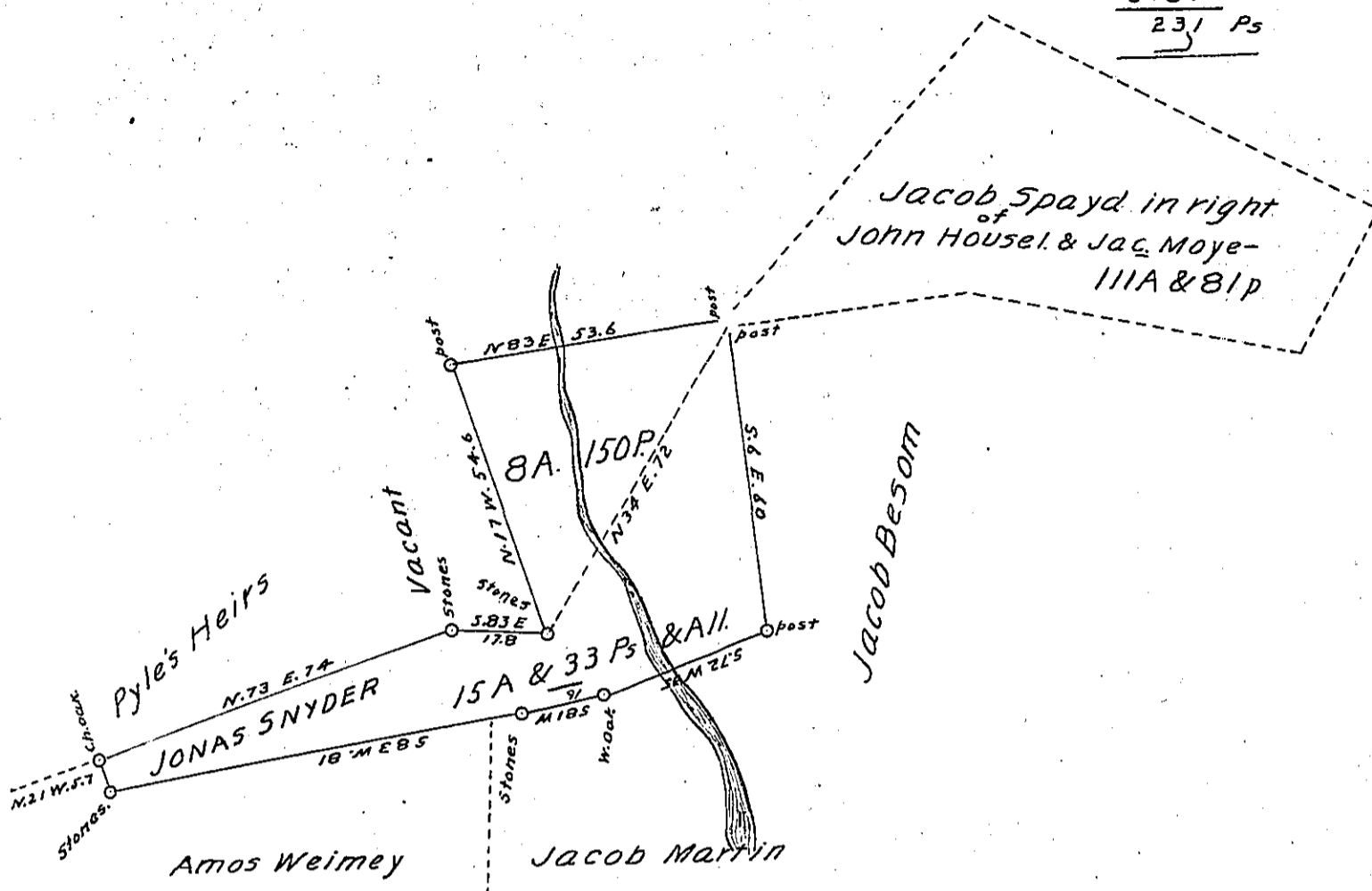


7015
 6784
 231 Ps



Draft of a tract of land situate in Perry township, Snyder Co. The triangular piece containing 8A. & 150 ps. is from a larger tract which was surveyed in virtue of a Warrant dated 27th June 1792 granted to Housel & Moyer, and the residue of the tract of which the above is a draft was surveyed the 23rd July 1840, for Jacob Besom in virtue of his Warrant dated the 14th day of April 1840, resurveyed for Jonas Snyder the 15th day of March 1859. Containing twenty four Acres, & twenty three perches with Allowance of six pr. Cent for roads &c.

To John Rowe Esq.

per W^m Moyer C.S.

Surveyor General of Penna.

IN TESTIMONY that the above is a copy of the original remaining on file in the Department of Internal Affairs of Pennsylvania; made conformably to an Act of Assembly approved the 16th day of February, 1833, I have hereunto set my Hand and caused the Seal of said Department to be affixed at Harrisburg, this fifteenth day of February 1904.

George P. ...
 Secretary of Internal Affairs.